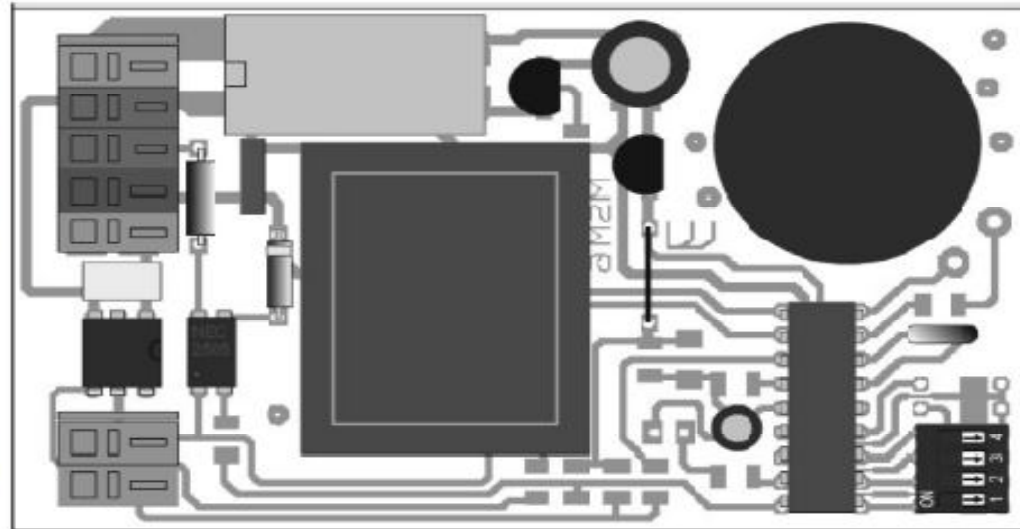


# ECOMAX PCB Wiring Diagram

- Power to the Run components X 7
- Power in, Hot X 6
- Power to the developer heater X 5
- Power in, Neutral X 4
- Power to the replenishment pump X 3
  
- Film feed switch X 2
- Film feed switch X 1



NOTES: The film feed switch circuit (X1 & X2) is a normally closed (NC) circuit. There should be continuity through this circuit.

110-120VAC should always be present between X4 and X6 when the processor is turned on. If 110-120VAC is detected, the light on the board should be lit, either solid or flashing.

The Run components mentioned for the X7 circuit include drive motor, water solenoid, and dryer heater.