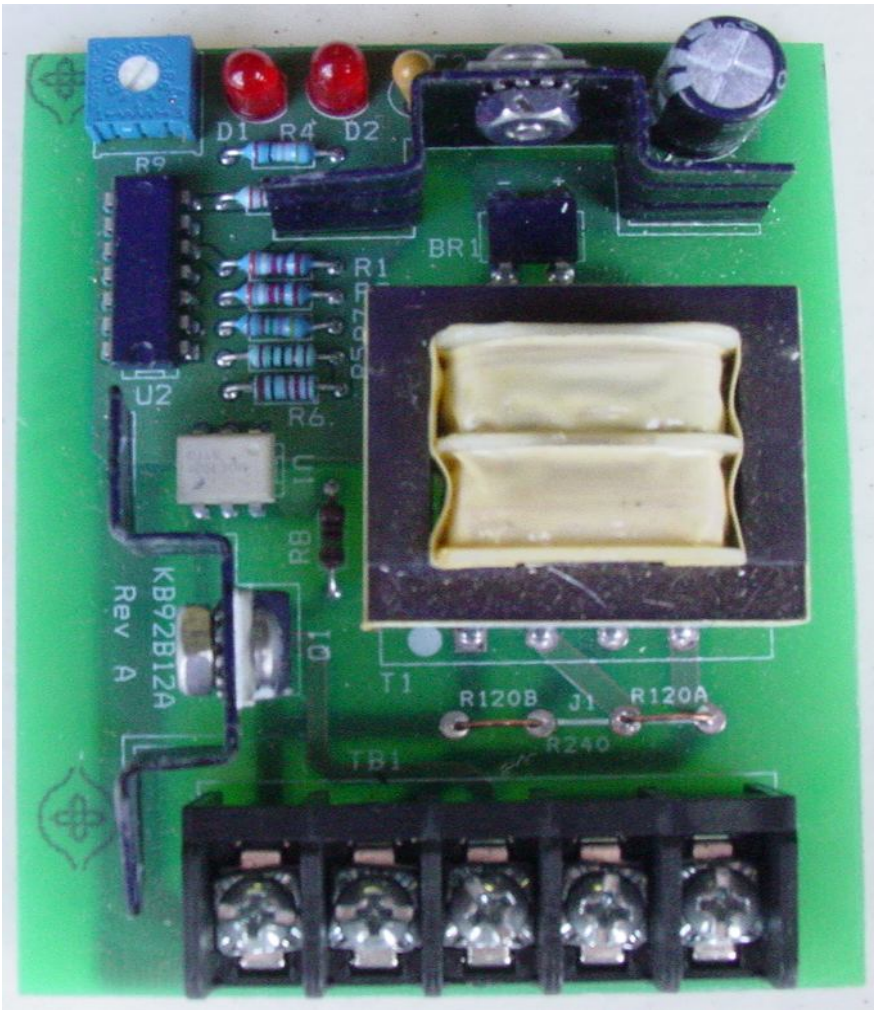


Temperature Control System

Simple, Affordable Temperature Control for OEM Applications







The KB92B12A temperature control has been used successfully in OEM applications for temperature control, such as in x-ray film processors manufactured by Fischer Industries.

The KB92B12A is now available for OEM use in any application that requires temperature control between 84°F and 122°F (29°C to 50°C). We can provide the complete system:

- * Temperature control board
- * Temperature sensor probe
- * Indicator lamp
- * Indicator chime
- * Indicator alarm

All items can be provided in either 110V or 220V, so export inquiries are encouraged.

Single unit sales are allowed, and OEM pricing is available for large quantities. Please contact us at sales@fisalesllc.com with your quantity requirements.

Part Number	Description	Voltage	
KB92B12A	Temperature Control Board	110-120VAC	Shown above
KB94B12A	Temperature Control Board	220-240VAC	Shown above
KB87A1A	Temperature Sensor Probe 1000 ohm NTC Thermistor	110-240VAC	
KL85E1	Red Neon Indicator Lamp	110-120VAC	
KL88E1	Red Neon Indicator Lamp	220-240VAC	
KL85E6	Single Shot Indicator Chime	110-120VAC	
KL88E6	Single Shot Indicator Chime	220-240VAC	
KL85E5	Continuous Indicator Alarm	110-120VAC	
KL88E5	Continuous Indicator Alarm	220-240VAC	



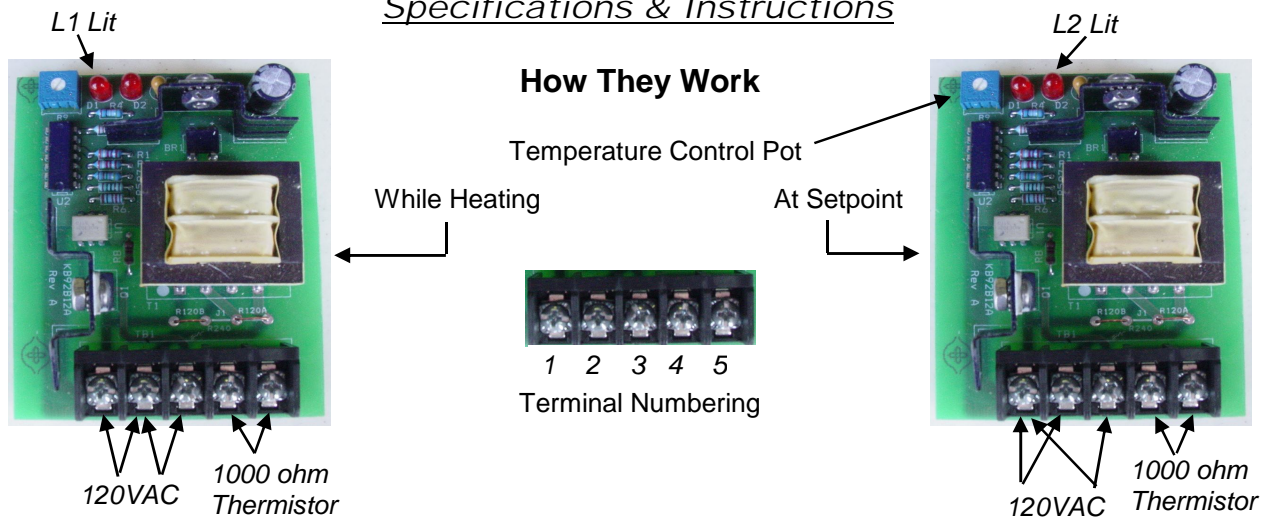
®
FI Sales, LLC®

761 N. 17th Street, #17
St. Charles, IL 60174 USA
(630) 444-1380 Fax: (630) 444-1381

Visit FI Sales online at
www.fisalesllc.com
or email us at
sales@fisalesllc.com

Temperature Control System

Specifications & Instructions



The KB92B12A will control temperature between 84°F and 122°F (29°C to 50°C). Connect a 1000 ohm thermistor probe to terminals 4 & 5 (counting left to right). We recommend a 1000 ohm NTC thermistor, part number KB87A1A. At normal room temperature, the resistance of the KB87A1A is 1000 ohms. As the temperature increases, the resistance decreases, and that change in resistance is interpreted by the KB92B12A in order to control the temperature at the setpoint.

The setpoint is controlled by turning the blue pot on the KB92B12A. Clockwise turns raise temperature and counter-clockwise turns lower temperature.

The LED on the left side of the KB92B12A (L1) lights when the KB92B12A enables heating. When the setpoint is approached, both L1 & L2 will light. When setpoint is reached, L2 will light while L1 will go dark.

To use the KB92B12A, 110 VAC (or 220 VAC for KB94B12A) must be connected to terminals 1 & 2. When heating while L1 is lit, 110 VAC is also present between terminals 2 & 3. Between terminals 2 & 3 is where your heating device should be connected. When the setpoint is reached and L2 is lit, terminals 2 & 3 no longer carry 110 VAC, but 110 VAC is now present between terminals 1 & 3. Between terminals 2 & 3 is where an indicator device such as a light or chime can be connected to indicate that the setpoint has been reached. For indicator devices, we offer a red neon lamp, single shot chime, and a continuous alarm. In other applications, you may wish to connect the indicator device between terminals 2 & 3 so that the indicator is ON while the heating is taking place on the way to reaching setpoint. Upon reaching setpoint, the indicator device will turn OFF.

Items	Specifications
KB92B12A & KB94B12A	3" wide X 3.75" tall, fits nicely into Snaptrack housing
KL87A1A	.187" OD 6" long SS shaft with 18" wire leads
KL85E1 & KL88E1	.303" OD plastic body, 6" overall length including wire leads
KL85E6 & KL88E6	Mounts in 1.125" cutout with 1.885" behind panel length including 2 screw terminals
KL88E5 & KL88E5	Mounts in 1.125" cutout with 1.825" behind panel length including 2 screw terminals



FI Sales, LLC®

761 N. 17th St., #17
 St. Charles, IL 60174 USA
 (630) 444-1380 Fax: (630) 444-1381
www.fisalesllc.com
 email: sales@fisalesllc.com

© 2008 FI Sales, LLC